



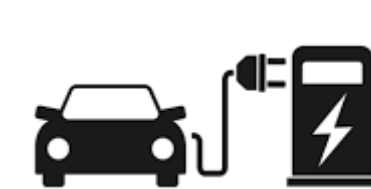
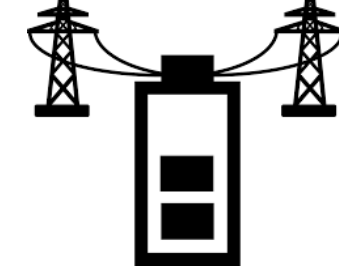
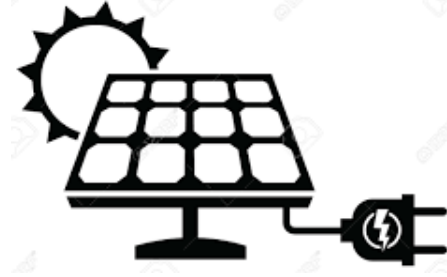
# Crisis in Power Engineering Education: A National Security Concern Minneapolis, MN October 21-22, 2022



## Eaton Corporation



### Manufacturing

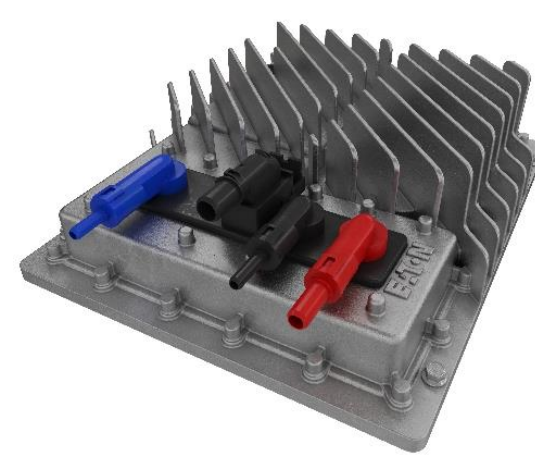


### Company Background

Company Net Worth: \$20 Billion  
Employee count Worldwide: 92,000  
Facilities worldwide: Unites States (Ohio, Wisconsin, Michigan, Minnesota, California, North Carolina etc.), India, China, Czech Republic, United Kingdom

## Electric Vehicle Components

### DC/DC Converter



### Power Distribution Unit



### Traction Inverter



### Power and Energy Focus

Electric Lighting, Fuses, Magnetics, Automotive traction inverters, On Board Chargers, Fast Chargers, Fuel Cell Vehicle power converters, Energy storage

## Fuses



## LED Lighting



### Power and Energy Talent Base

Current talent composition by educational qualification

|                   |        |
|-------------------|--------|
| Associate Degree  | 3.49%  |
| Bachelor's Degree | 15.12% |
| Doctorate Degree  | 58.14% |
| Masters Degree    | 17.44% |
| Unspecified       | 5.81%  |

### Salary and Benefits for EE

Cannot disclose

### Growth and Hiring

We leverage our global resources to attract, engage, develop and retain talented people worldwide, ensuring an environment in which they can thrive. We offer highly competitive benefits, excellent work/life effectiveness and continuous support for personal and professional development. We also invest in leadership training to ensure we're prepared for the future with a strong pipeline of exceptional people.

[Careers](#) | [Employment](#) | [Job search](#) | [Eaton](#)

| Req. ID | External Job Title                             | City            |
|---------|--|-----------------|
| 122490  | Power Conversion Specialist Engineer           | Menomonee Falls |
| 126072  | Senior Specialist Engineer - Power Electronics | Menomonee Falls |
| 126990  | Specialist Engineer - Power Electronics        | Menomonee Falls |
| 128217  | Specialist Power Electronics Engineer          | Southfield      |
| 129130  | Lead Engineer                                  | Southfield      |